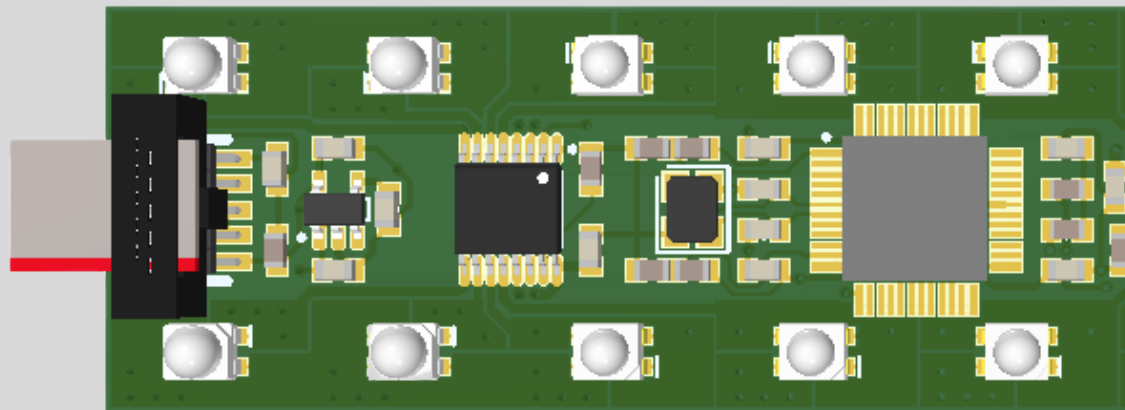
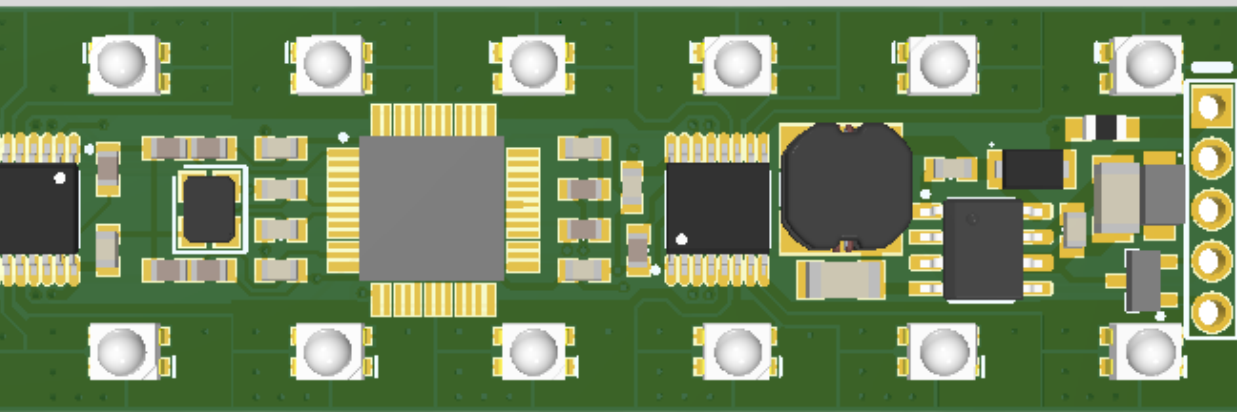




BAULDS

YOUR PRODUCT **SMARTER**



BAULDS LIGHTHOUSE INDICATOR

**"The customer
has full control."**

ABOUT

Without users and operators of machines and technical installations being aware, colors of a signal lamp indicate a certain status. Safety signal lamps are necessary to give user feedback about the system. Baulds offers a CAN bus controlled Lighthouse Indicator.

It is a safety lamp which gives a good indication of system performance, statuses and more. The indicator is often used to give information about:

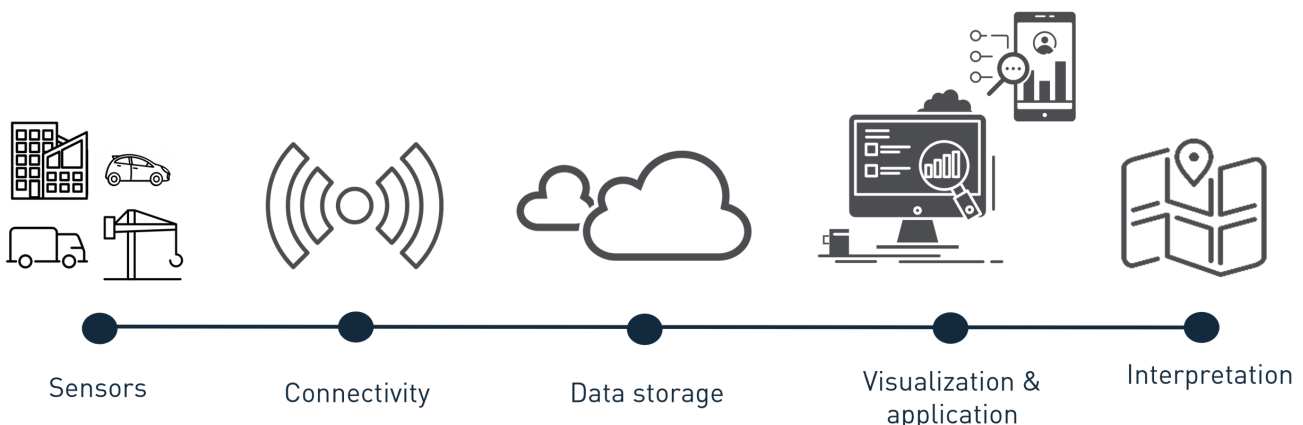
- status about the level of a liquid in a tank, such as how much water a fire truck has left
- status about the amount of energy left, for example the current state of charge of a battery pack
- status of the temperature that cannot exceed a maximum, for example a temperature controlled truck that warns the driver when the temperature becomes too high.

In practice, the following colors are commonly used:

- Red: stop, danger
- Orange: standby
- Green: safe, enabled

CUSTOMIZATION THROUGH MODULARITY

Baulds always provides custom solutions and the BLI is therefore suitable for many applications, for example compact cranes or climate-controlled transport. We can offer this versatility because of the modular design of our hardware and software.



FACTS BLI

Applications

- Status indication
- State of Charge (SoC)
- Level indication

Specifications

- 12 x Green LEDs
- 2 x Orange LEDs
- 2 x Red LEDs
- Individually controlled LEDs

Housing & Connector

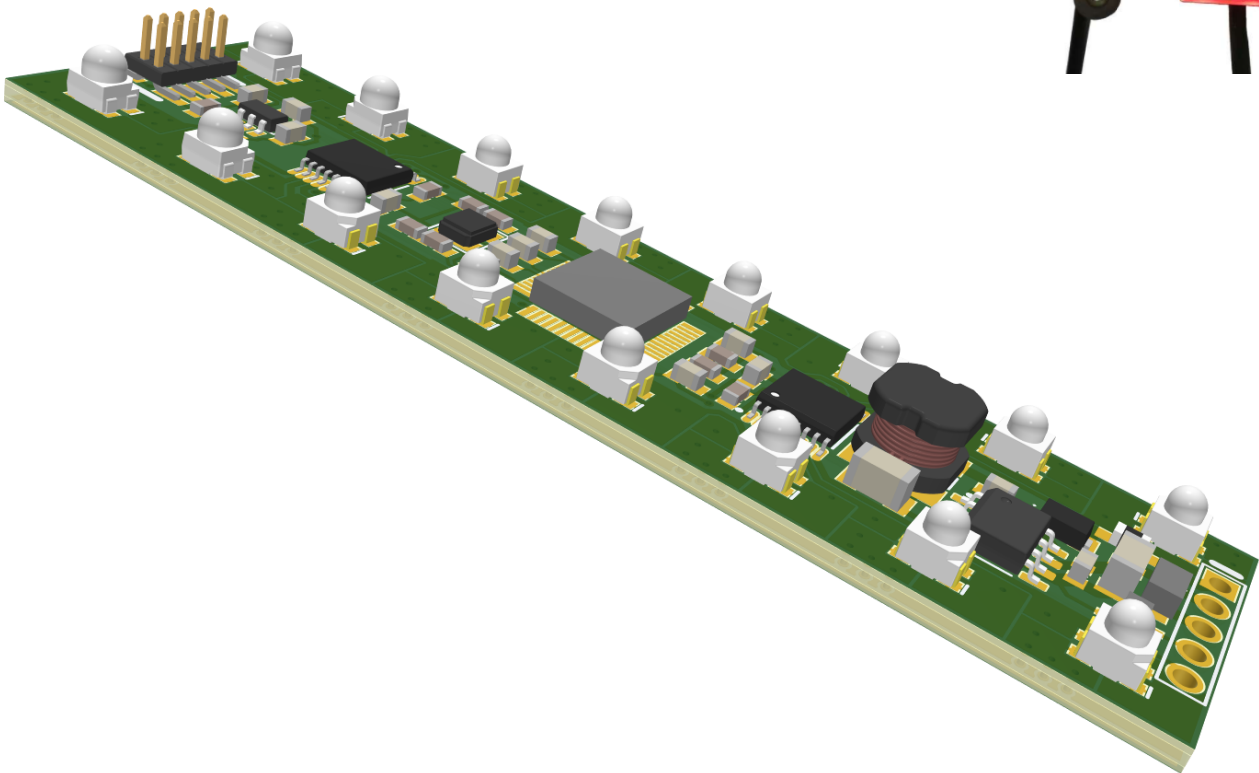
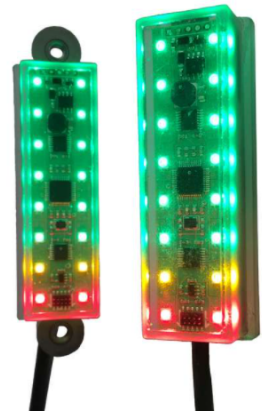
- IP67
- M12 connector
- Easy mounting

Power Supply

- Wide operating voltage
9-36 VDC

Communication

- CAN-open





Baulds B.V.
Energieweg 48-50
3771 NA Barneveld - Nederland
+31 (0) 342 42 13 33
www.baulds.nl